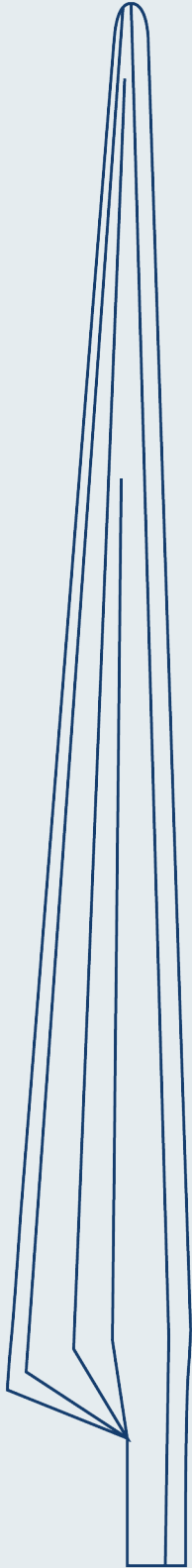


LS56-100



LS56-100

General

Windclass	[-]	IEC 3,4,5
Wind Speed nominal	[m/s]	12
Rotor diameter (approx.)	[m]	18
Rated power	[kW]	100
Power control	[-]	Pitch
Materials	[-]	Glass/Vinyl Ester
Blade root construction	[-]	Glass/Vinyl Ester

Aerodynamics

Airfoils	[-]	LS(1) Series
----------	-----	--------------

Mechanics

Mass without bolts	[kg]	162
--------------------	------	-----

Geometry

Blade length	[m]	8.30
Maxium chord	[m]	0.95
Thickness	[%]	12-25
Twist	[deg]	11.0
Blade area	[m ²]	9.35

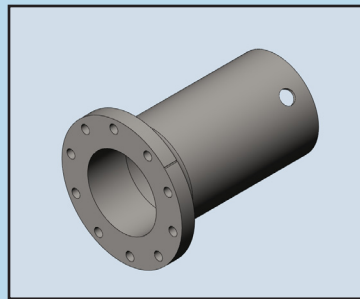
Mounting

Mounting diameter	[mm]	250
Number of bolts	[-]	10
Bolt size	[-]	M20x1.5
Type	[-]	Bonded inserts

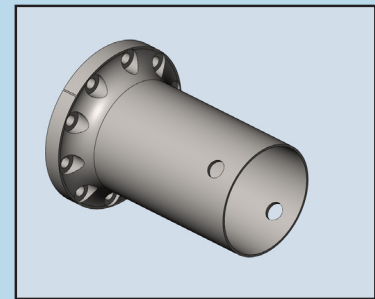
Miscellaneous

Lightning protection	[-]	None
Erosion protection	[-]	PU

Steel Mounting Flange



Front View



Back View



2423 Hoover Avenue · National City, CA 91950 USA
 PHONE: 619-791-1050
 WWW.KCWIND.COM